

**August/September
2008**

Volume 8, Issue 4



Outstanding RSVP Members of 2007

Inside this issue:

New Members	2
Breakfast of Champions	3
Community Outreach	4
Birthdays	5
Helping Hands are Needed	6
News Reehl	7

Special points of interest:

- Golden Corral Restaurant to sponsor RSVP newsletter through 2008.
- Breakfast of Champions scheduled for August. 19th

WestArk RSVP is recognizing the top 5% of its membership who volunteered the highest number of hours during 2007. These members are to be commended for their outstanding volunteer service.

These 46 RSVP members provided over 49,000 hours of volunteer service and accounted for 23% of all volunteer hours reported by RSVP members during 2007.

Many on this list are returning All-stars who were recognized last year. But 35% of the members on the list are being recognized for the first time as an "Outstanding RSVP Member".

In recognition of their service these individuals will be offered an opportunity to have a

guest accompany them to the "Breakfast of Champions". A list of the honorees and their major volunteer assignments follows:

Bobby Abbott
First Tee

Joseph Borden
Linda Butler
David Callahan,
Rudy Jorgensen
Bertine Rozelle
Richard Summers
Preston Swofford

Mary Tausinger
St. Edward Mercy Medical Center—SEMMC

Rita Bowen
Summit Medical Center Auxiliary

John Brown
*Fort Smith Trolley Museum,
Baker Senior Center*

Clyde Chaney
Lorina Garner
Golden Rule Clothes Closet

Pauline Cole
Beverly Davis
Barling Senior Center

Dorothy Dewitt
*Barling Senior Center, Project
Compassion*

Linda Elam
*Good Samaritan Clinic, Alz-
heimer's Association*

JoAnn Flocks
Good Samaritan Clinic

B.G. Hendrix
AARP

Dimple Johnson
Scott Co. Senior Center

Richard Kutschall
AARP Tax-Aide

Layton Jackson
Fort Smith Public Schools

Anita James
*Crawford County Volunteers for
Literacy, RSVP Advisory Council*

Continued on Page 2.

New RSVP Members



Please welcome the newest members of WestArk RSVP. They bring many talents and skills along with their enthusiasm. Current enrollment stands at 946 members.

Cathy Bain
Wilkie Blades

Barbara Bond
Mary Bruce
Betty Coots
Grace Dehart
Helen Easterwood
Leo Geher
Joicie Gilbreath
Janell Glover

Joan Harper
Barbara Hartman
Joyce Hopkins
Yvonne Mizell
Kay Ollie
Amelia Parks

Outstanding RSVP Members of 2007 continued

Don James
Beverly Davis
Betty Swanson

Crawford County Volunteers for Literacy

Ellen Karatzou

Reynolds Cancer Support House, Rheem Classic, Mercy Hospice, SEMMC

David Kerr
Bradley Martin

Trolley Museum

Kathy Luedloff

WestArk RSVP, WAC&GC

Mary Jean Moore

Midtown Senior Center

Dorothy McCartt

RSVP Advisory Council, RSVP Community Outreach

Jeanne McKim

Church on the Streets-COTS, Little Theatre,

Ft. Smith Public Schools, Good Samaritan Clinic, St. Paul United Methodist Church, Christ the King Catholic Church

Dorothy Molumby

Ft. Smith Police Dept., Ft. Smith Senior Center

Deanna Paschall

Ft. Smith Public Library, Golden Rule Clothes Closet

Charles Raney

Ft. Smith Historical Society, Friends of Oak Cemetery, Kiwanis Club

Jim Rose

Habitat for Humanity, Fort Smith Classic

Blanche Smith

Ragon Family Center

Zeta Smith

Knitting for Reynolds Cancer Support House and Project Compassion, Wesley UMC

Dorothy Snyder

City of Fort Smith, Golden Rule Clothes Closet, Ft. Smith Classic

Iyla Stranahan

SEMMC, SRMC, Heart to Heart Pregnancy Support Center, UA-Fort Smith Foundation, Reynolds Cancer Support House

Sister Dolorita Thompson

St. Scholastica Center, Mercy Hospice

Rod Tschetter

Fort Smith Senior Center

Delma Woosley

Project Compassion, Ft. Smith Public Schools

Bea Zemansky

Sparks Regional Medical Center—SRMC

Nancy Zornes

Project Compassion, RSVP Advisory Council

2008 Breakfast of Champions

The Breakfast of Champions (BC) will be held on Tuesday, August 19th at the Golden Corral Restaurant in Fort Smith. All RSVP members who have reported volunteer hours during 2008 will receive an invitation no later than August 10th.

The BC is an opportunity for us to say a big thank you to RSVP members for their generous volunteer service. Unfortunately, every year several members are very unhappy because they are unaware of how the event operates. Some things to consider:

- You have to be an invited RSVP member or guest to attend the BC. (If you forget your ticket, Trish will be able to allow you entrance by checking our membership rolls but it will delay your admittance).

- Golden Corral is not open to the public during the BC. The Breakfast of Champions is a private party and RSVP pays for each per-

son who enters Golden Corral. Grant funds are earmarked for this form of volunteer recognition.

- You can not personally pay for a guest—even if they are your spouse, grandchild or chauffer.

- You can't show up with a potential RSVP member and expect admission—even if they offer to fill out the application on the spot.

- The doors are never opened early! Those folks you see slipping in are Volunteer Coordinators who have graciously agreed to serve beverages during the BC. The doors open at 7 a.m. to accommodate members who are still employed or who have an early volunteer assignment.

- For the BC an area on the far side of the serving lines (East or back wall) will be set-up for those who have difficulty walking. This area is for not only the obvious like those with walkers and crutches but also

those with temporary problem like new hips or knees. **THIS IS A CHANGE FROM LAST YEAR** when folks were seated immediately to the right upon entering. The old area was a long way from the food and in the highest traffic area.

- You are asked to contact the RSVP Center at 783-4155 to reserve a place at the BC. It would also be appreciated if those who are unable to attend would also notify RSVP.

Trish walker and Susan Reehl look forward to seeing RSVP members at the Breakfast of Champions. Over 500 RSVP members and guests are anticipated at this year's event.



**Breakfast of
Champions
doors open at
7 a.m.**



RSVP Community Outreach



23% of Arkansas taxpayers who receive SSA, VA or RR benefits haven't filed for ESP.

The Fraud Patrol has a been re-named **RSVP Community Outreach** to reflect the variety of services now offered by its members. The volunteers who started out in 2003 making presentations to Medicare recipients about identifying, preventing and reporting Medicare fraud are now:

1. Assisting Medicare recipients in choosing a Medicare plan using the Medicare.gov website and materials provided by the Arkansas Insurance Commission.
- 2.Helping determine which Medicare plan will

meet consumers needs at the lowest cost (Primarily during Open Enrollment of November 15th through December 31st).

2.Counseling new or soon to be Medicare recipients about choices which need to be made when entering Medicare (it's a lot like learning a new language).

3.Aid Medicare recipients in completing applications for federal and state assistance programs and aid recipients in understanding the response to their application

4.Assisting Medicare

recipients who have been misled or are having problems with using their Medicare coverage.

5.Problem solving and serving as an advocate.

6.Complete fraud reports for SHIIP and Arkansas SMP.

7.Assisting the uninsured and the underinsured in applying for assistance from pharmaceutical manufacturers.

8.Make presentations to Medicare recipients at senior centers, churches and health fairs.

The new logo is at the far left. Training is open to new volunteers.

Not Too Late for Economic Stimulus Payments



It is not too late for those with qualifying income such as Social Security benefits, certain Railroad Retirement benefits, and certain veterans' benefits to file a 2007 federal income tax return in order

to receive an economic stimulus payment.

23% of the Arkansas taxpayers who meet the criteria listed above haven't filed a 2007 tax return and claimed their stimulus pay-

ment.

RSVP Center will provide free tax assistance and electronic filing on Tuesday's from 9 a.m. until 3 p.m. through the end of the year.

Here are some links to IRS.gov regarding the ESP

Haven't received your payment yet:

<http://www.irs.gov/newsroom/article/0,,id=181997,00.html>

Where's My Stimulus Payment (online application to check status ESP):

<http://www.irs.gov/individuals/article/0,,id=181665,00.html>

Birthdays

AUGUST

1	Mary Lou Pointon	17	Anita Dobbins
2	Dale Kesner	17	Betty Hanna
2	Margie Lee	17	Kathy Luedloff
2	Jeanne McKim	17	Wanda Ramey
3	Billie Newman	17	Finley Turner
3	John Weir	17	Mary Wagner
4	Elaine Gress	18	Betty Campbell
4	Ezra Kytile	18	Gary Hayes
4	Betty McCaffrey	18	Earl Martin
5	Jerry Benjamin	19	Carole Barger
6	Sandy Johnson	19	Barbara Hartman
7	Kathy Fritts	19	Gwendolyn Long
7	Larry Ichniowski	19	Norma Watkins
7	Celestine Sharum	20	Karen Carr
7	Anne Udouj	20	Elizabeth Eubanks
7	Louise White	20	Teddy Martin
8	Ron Hibbs	20	Betty Pryor
8	Linda King	20	Zeta Smith
8	Joan McCoy	21	Tom Leverette
9	Clara Treat	22	Mary Edwards
11	Rayna Ray	22	Jack Wright
12	Claire Flynn	23	Eileen Scott
12	Richard Kutschall	24	Betty Wheaton
12	Rod Tschetter	25	Vera Cary
12	Ann Wagon	25	Terrell Covington
12	Ray Ward	25	Mary DeGraw
13	Annella Brewer	26	Lois Moran
13	Lois Byers	26	Alice Orrick
13	Wesley Warnock	26	Jean Parker
13	Floyd Zornes	28	Janice Hamby
14	Clara Lollis	28	Polly Oliver
15	Freida Brewer-Myers	28	Sam Williams Sr.
15	Marcella Campbell	29	Norma Griffith
15	Leo Geher	30	Nan Benn
15	Marie Martin	30	Joan Harris
16	Dorothy Dolan	30	Bill Reed
		31	Iris Hightower
		31	Earlene Ivy

SEPTEMBER

1	Lee Cross	12	Linda Morse
1	Leota Hamilton	12	Ruth Anne Price
1	Hazel Limberg	13	Judy Fraleigh
1	Henry Oliver	13	Thelma Hunt
2	Ellen Karatzou	15	Celeste Boykin
2	Lillian Neckar	15	Delpha Rosson
3	Mary Ann Elkins	15	Maggie Wolford
3	Chris Humann	16	Delmar Bullington
3	Virginia Pankey	16	Audrey Danis
5	Gerald Cokely	17	Nelda Glover
5	Sue Hughes	17	Kathy McKee
5	Rudy Jorgensen	17	Helen Robinson
5	June Lewis	17	Catherine Swafford
5	Preston Swofford	18	Dixie Jones
6	Barbara Bond	19	Lee Chadwick
6	Sue Camfield	19	Sid Donaldson
6	Evelyn Huff	19	W.R. Knowles
6	Betty Yancey	19	Kathryn Winfield
7	Virginia Shaver	19	Gretchen Hill
8	Betty Laster	21	Jeanne Thomas
8	Louella Moore	21	Allan Crump
8	Jeannie Neely	22	Joyce Cokely
9	Kathleen Benjamin	23	Aggie Lensing
9	Ruth Oelrich	23	Raye Levering
9	Hope Reed	23	Marion Marshall
9	Lisa Richardson	25	Grace Dehart
10	Jannia Green	25	James Moore
10	Lois Harris	25	Darlene Roberts
10	Anne Sayers	25	Pearline Waren
11	Liz Robinson	27	Nelda Baber
11	Betty Swanson	27	Larry Goss
11	George Talley	28	Dave Galloway
11	Hilda Wallis	28	Charlotte Hatwig
11	Leon Woods	28	Bedell Hightower
12	Eugene Lovell	29	Raye Purkey
12	Jean Morse	30	Clarice Cousins
		30	Inavee Reves

Helping Hands are Needed



Fort Smith Art Center is in need of a volunteer to provide assistance on any day -Tuesday through Saturday during the hours the Art Center operates. Volunteers will greet visitors, answer the phone and help with special projects and events.



Sutton Elementary School (RSVP's Partner in Education) and every elementary school in the

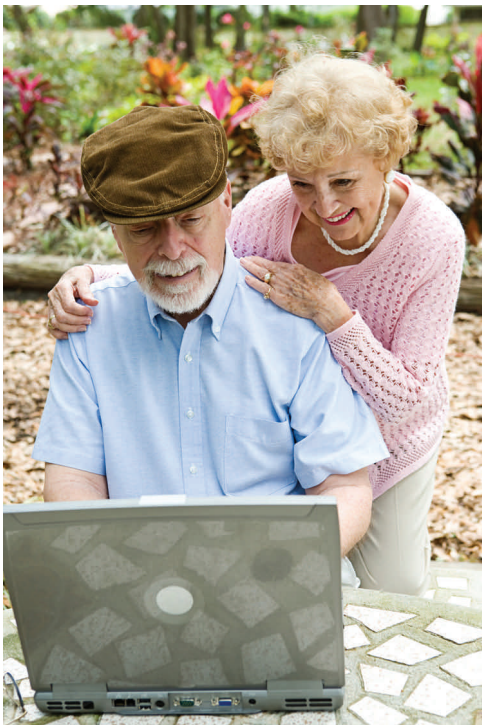
area needs volunteers. School starts August 18th and assistance is needed to:

- Read a book to a class or to an individual student;
- Tutor an individual student;
- Help organize and stock Sutton's clothes closet;
- Cut out letters and/or color objects for teachers;
- Decorate bulletin

boards;

- Teach students to knit, crochet, or quilt;
 - Assist with class projects, assignments, field trips, and other activities;
 - Share your career or hobby with a class;
 - Practice vocabulary words with students;
 - Practice the times tables with students;
- and
Eat lunch with a group of students.

Training for New Tax Volunteers



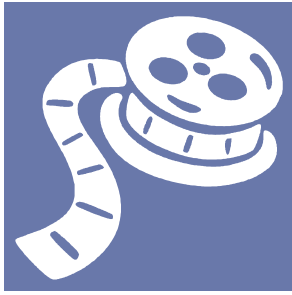
Additional volunteers are needed to join RSVP efforts to provide tax service and electronic filing without costs to working families with modest in-

comes and seniors.

No previous tax experience is required. Volunteers will be trained to use the software provided to RSVP by the IRS. Training will be provided individually to those interested in tax preparation. Volunteers may start training now by

contacting Trish Walker at 783-4155 or trishrsvp@ipa.net.

This is a very hands-on type of volunteering with an immediate impact on those you serve. Opportunities for service on Saturday and week nights are available.



News Reehl . . . by Susan Peacock Reehl

I can't believe the summer is nearly over. I've almost gotten use to weekly thunderstorms with 60 mph winds. It is good to see fewer boarded up windows and blue tarps on roofs.

I was recently asked a delightful question: "How do you donate money to RSVP". My answer—"We take cash and checks!". It seems that all of our traditional funding has been reduced or is in question for 2009. WestArk RSVP has been blessed with donations from several of our members.

We are very grateful for their generosity.

You will notice at the bottom of this column that Golden Corral has once again generously sponsored this newsletter. We are grateful for their continuing support.

Reporting your hours is a key element to your membership in RSVP. You probably don't realize the full impact of the volunteer hours you report .

The hours you report tell a story. These numbers speak of active, involved seniors. The forms you fill in are tallied and the numbers put in reports that go to state and federal agencies. These numbers

show just how much RSVP volunteers do, the impact it has on our community and how valuable a resource RSVP members are.

So when we say EVERY HOUR MATTERS we mean it!

We need all your volunteer service time reported. If you have volunteer hours from the past that you haven't sent in - even back to January 1st of this year—we can still accept them. But we would greatly appreciate you reporting your hours on a monthly basis.

Your service is greatly appreciated. For many organizations your service allows their continued operation.



Golden Corral Restaurant is underwriting four editions of our newsletter.

This edition of the Newsletter was financially supported and sponsored by:

SENIOR'S Early Bird BUFFET

Senior Day
Monday, all you can eat buffet, all inclusive price of
\$5.89 with drink from 11a.m. - 4p.m.
\$8.19 with drink from 4p.m. - 9p.m.

Senior Early Bird Buffet Special
\$5.89 with drink from 1p.m. to 4p.m., Tuesday through Friday

Senior Early Bird Breakfast Buffet
\$5.89 with drink from 7a.m. to 9a.m., Saturday and Sunday

golden corral
Buffet & Grill

1801 S. Waldron - Fort Smith
479-484-1040

WestArk RSVP is a program of the Western
Arkansas Counseling & Guidance Center, Inc.

WestArk RSVP
401 North 13th Street
Fort Smith, AR 72901

NON-PROFIT
ORGANIZATION
U.S. POSTAGE
PAID
FORT SMITH, ARK
PERMIT NO. 24

Postmaster: *Change
Service is Requested.*

WestArk RSVP

401 North 13th Street
Fort Smith, AR 72901
Phone: **783-4155**
Fax: 782-2269
E-mail: rsvp@ipa.net
Web site:
www.WestArkRSVP.org

WestArk RSVP is sponsored
by the Western Arkansas
Counseling & Guidance Cen-
ter, Inc.

Hours of Operation

Monday—Friday
8:30 am—4:00 pm

Staff

Susan Reehl

Program Director:
susiersvp@ipa.net

Trish Walker

Volunteer Manager:
trishrsvp@ipa.net

VISTA

Sandra Pearson
sandyrsvp@ipa.net
Marsha Brown

Advisory Council

Karen Carr
Marsha Brown
Fred Hander
Ginger Helton

Anita James
Bill Johnston
Sandi Klein
Dorothy McCart
Kiel Norgard
Don Palmatary
Mary Lou Pointon
Tim Randolph
Nic Wintory
Liz Robinson
Nancy Zornes
Mayor Ray Baker
Cheryl Bledsaw
Gary Luedloff
Teresa Schlabach

RSVP
Getting Things Done.